

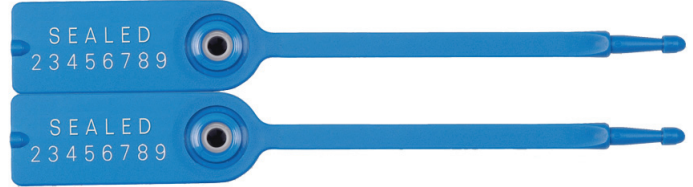


Gemini Tote Seal



The Gemini Tote Security Seal is a dual-numbered fixed length plastic security seal designed specifically to secure tote boxes used to transport merchandise from one location to another. Since totes require two seals to be properly secured, the Gemini Tote Security Seal is always manufactured in "twin" sets with identical numbers.

The Gemini Tote Seal is used significantly within the Retail, Pharmaceutical, Cargo/Freight & Cash-In Transit Industries



APPLICATIONS

- Tote Boxes
- In-flight Service Carts
- Storage Equipment
- Trailers w/multiple doors

FEATURES

- Durable, all-plastic, one-piece construction.
- Patented tamper-resistant locking mechanism and design.
- Thin, flat sealing strap designed to fit most totes.
- Identically numbered and hot stamped with a company name or logo.

MATERIAL

- HDPE and Acetal or
- Nylon and Acetal

DIMENSIONS

Overall Length: 5" and 7"

Operational Length:

5": 2.965"

7": 5.087"

Diameter when locked:

5": 1"

7": 1.5325"



Seals shown not actual size.

Gemini Tote Seal

www.BudcoSecuritySeals.com

Budco

Security That Is Evident Since 1964

STRENGTH CHARACTERISTICS

Break strength: HDPE: ~ 35 lbs.
Nylon: ~ 100 lbs.

MARKING/PRINTING

- Standard: Embossed
- Optional: Inkjet
- Cold stamped marking with two lines of up to 17 characters and 5-10 digits

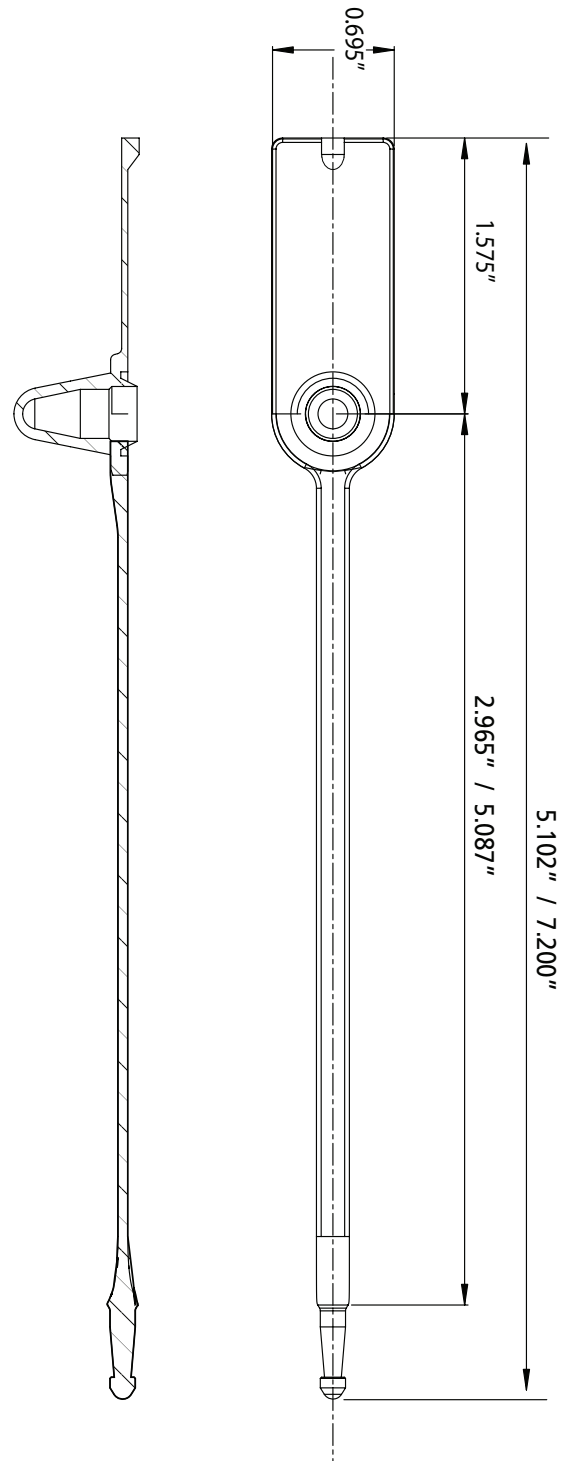
STANDARD COLORS

Red / Light Blue / Blue / Dark Blue / White / Green / Yellow /
Orange / Black



PACKAGING

2 per set
1,000 per carton (500 sets)
Carton Dimensions:
5": 11" x 9-1/2" x 10"
7": 11" x 9-1/2" x 13"
Carton Weight (Gross):
5": 5.25 lbs. per carton
7": 6.5 lbs. per carton



Gemini Tote_11V2



PO Box 3065 Tulsa, Ok 74101-3065 • 800.747.7307 • 800-611-8481

www.BudcoSecuritySeals.com

